

The Nuvo

One Bedroom + Study 647 sq.ft.

Balcony 101 sq.ft.

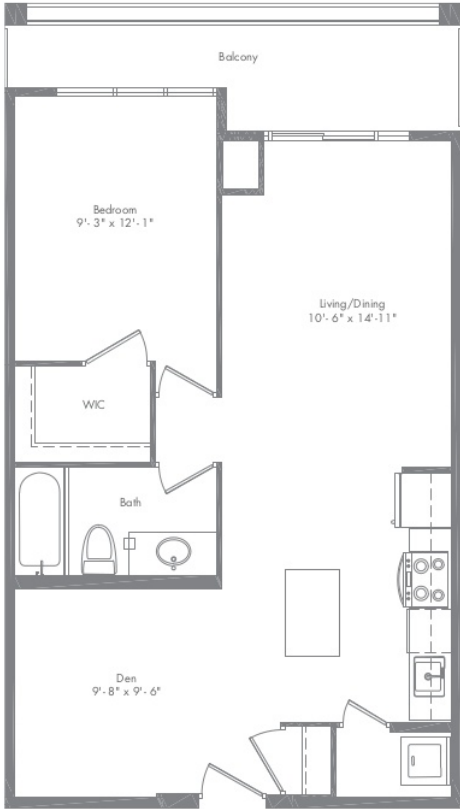


Sizes and specifications are subject to change without notice. All floorplans are approximate dimensions. Actual usable floor space may vary from the stated floor area. E. & O.E.

The Urban

One Bedroom + Den 673 sq.ft.

Balcony 82 sq.ft.

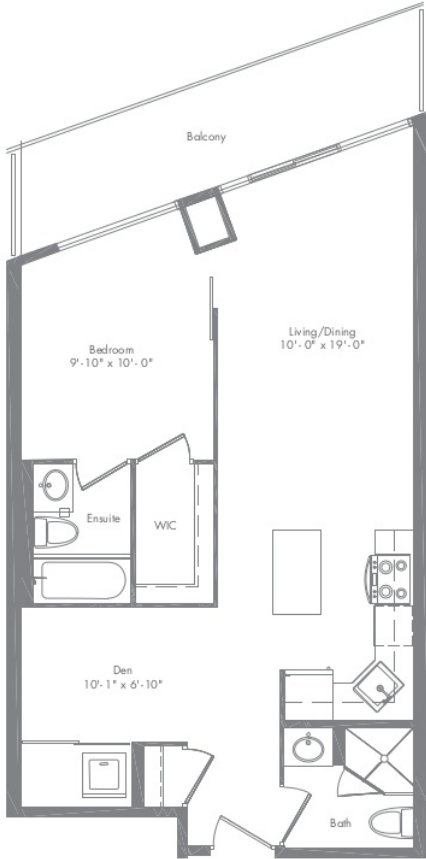


Sizes and specifications are subject to change without notice. All floor plans are approximated dimensions. Actual usable floor space may vary from the stated floor area. E. & O.E.

The Posh

One Bedroom + Den + Two Baths 711 sq.ft.

Balcony 116 sq.ft.



Floor 2



Floors 3-6

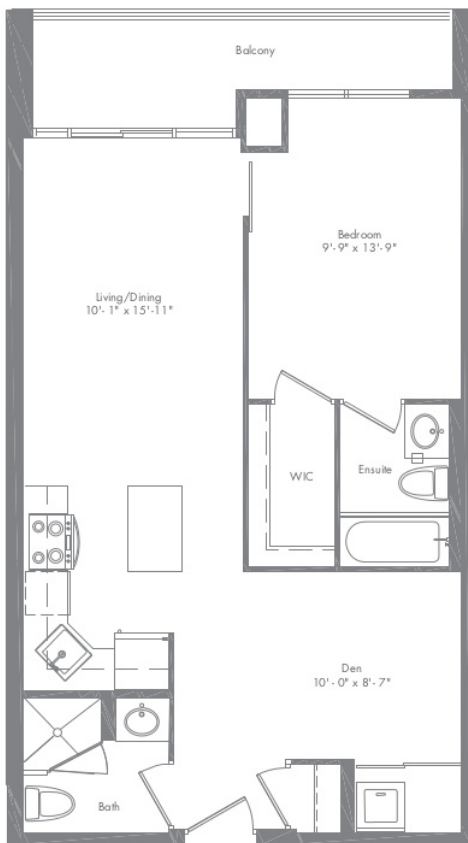


Sizes and specifications are subject to change without notice. All floor plans are approximate dimensions. Actual usable floor space may vary from the stated floor area. E. & O.E.

The Social

One Bedroom + Den + Two Baths 720 sq.ft.

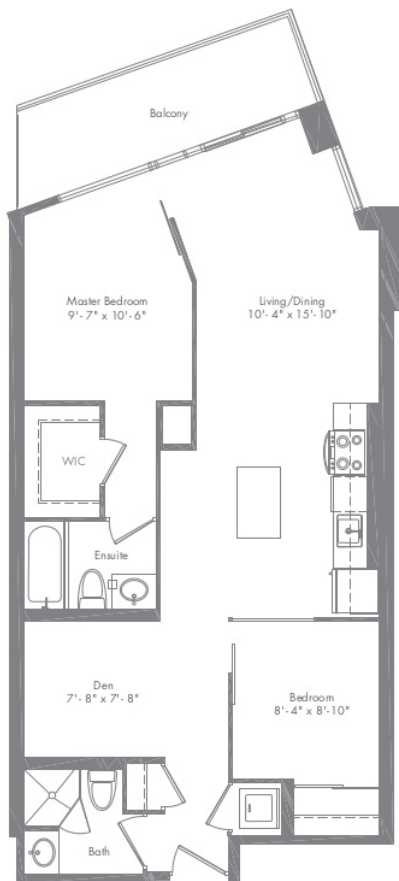
Balcony 79 sq.ft.



The Edge

Two Bedrooms + Den + Two Baths 845 sq.ft.

Balcony 90 sq.ft.



Floor 2



Floors 3-6



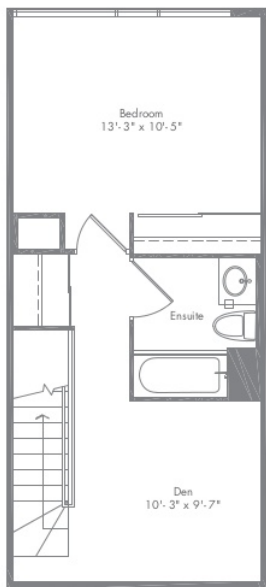
The Ultra

One Bedroom + Den + Two Baths 865 sq.ft.

Patio 77 sq.ft.



Ground Floor



Second Floor



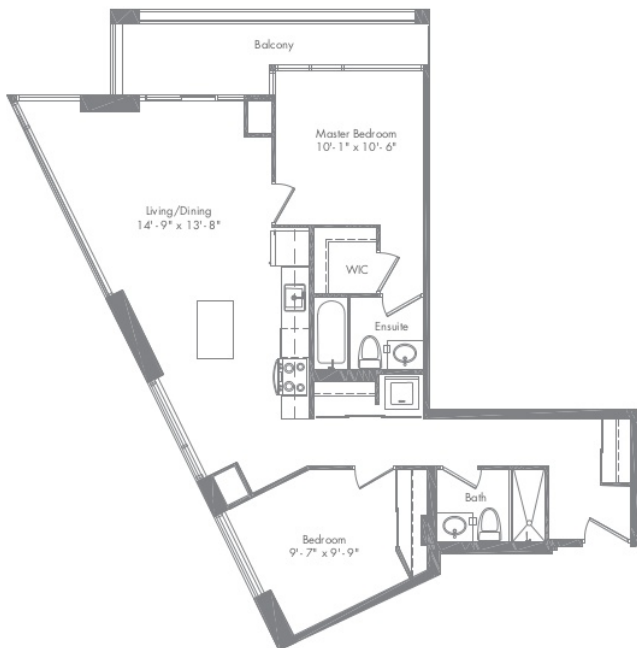
Ground Floor



The Chic

Two Bedrooms + Two Baths 884 sq.ft.

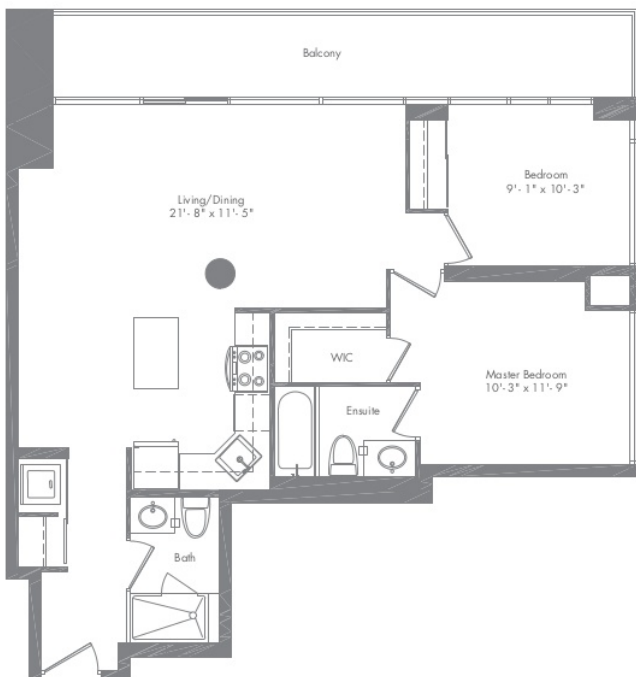
Balcony 84 sq.ft.



The Gala

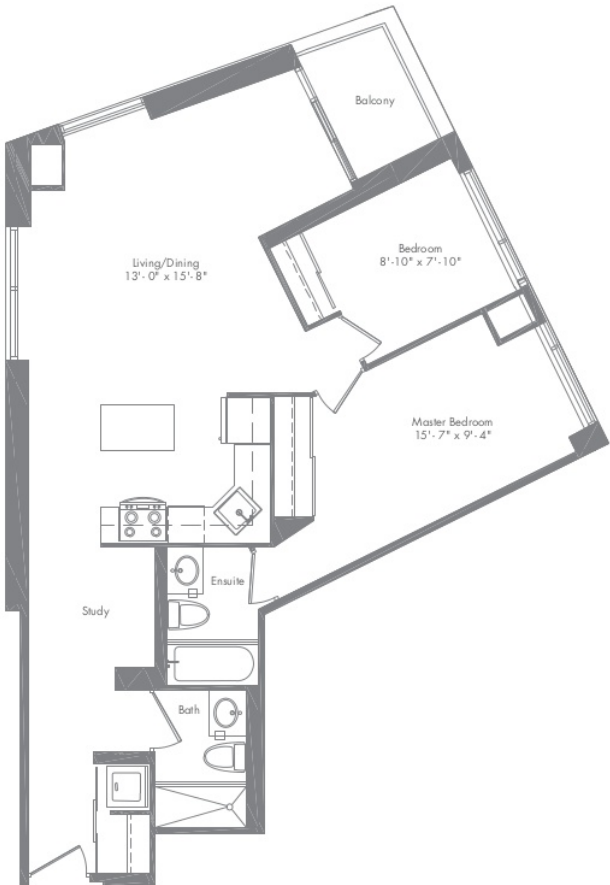
Two Bedrooms + Two Baths 884 sq.ft.

Balcony 149 sq.ft.



The Corner

Two Bedrooms + Study + Two Baths 911 sq.ft.
Balcony 35 sq.ft.



Sizes and specifications are subject to change without notice. All floor plans are approximated dimensions. Actual usable floor space may vary from the stated floor area. E. & O.E.

The Vogue

Two Bedrooms + Two Baths 1,007 sq.ft.

Balcony 214 sq.ft.

