



HILLSIDE
MEADOWS



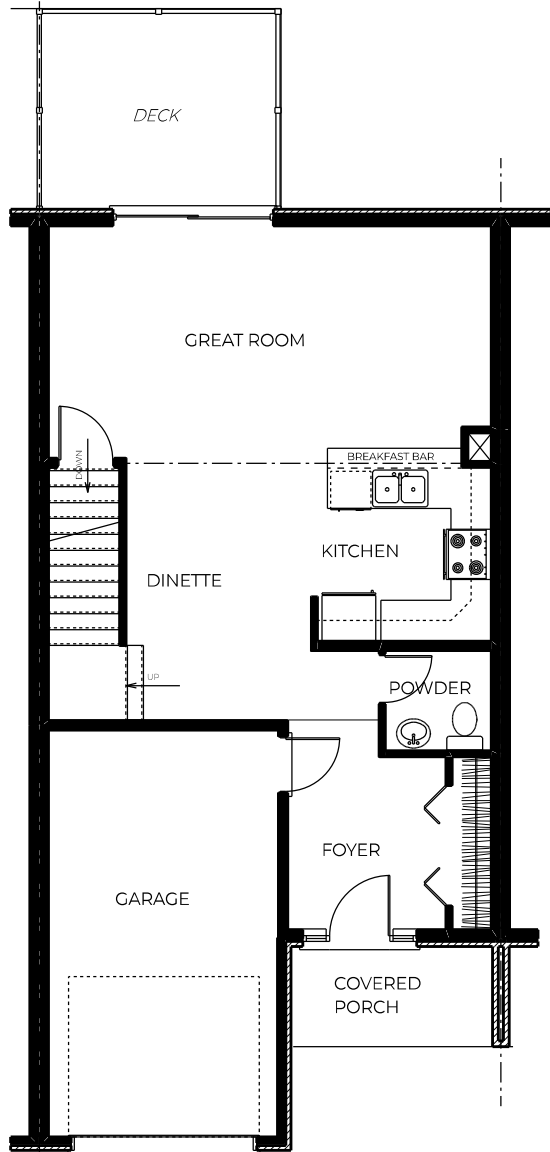
TWO-STOREY TOWNHOMES

2 & 3-BEDROOM TWO-STOREY TOWNHOMES

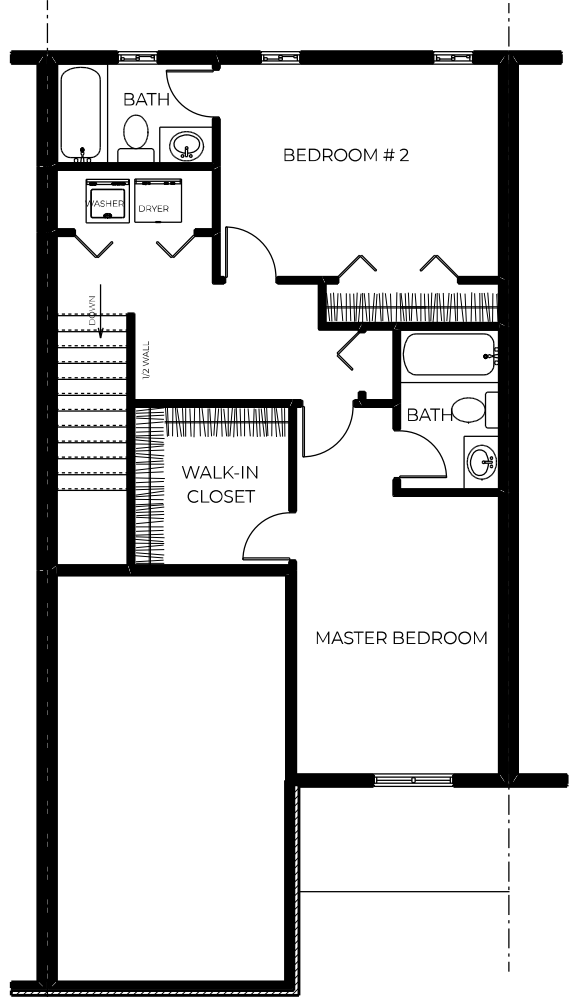




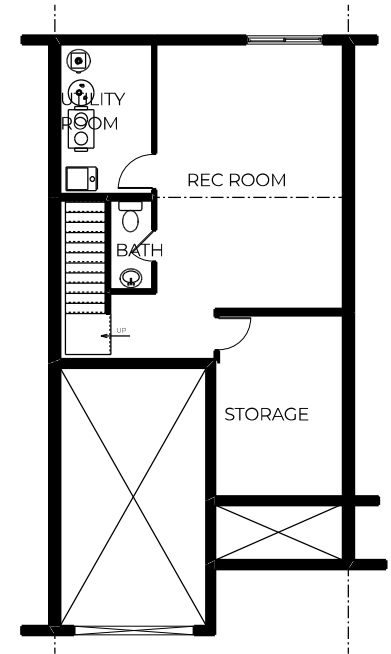
HILLSIDE
MEADOWS



MAIN FLOOR PLAN



SECOND FLOOR PLAN



OPTIONAL FINISHED LOWER LEVEL
365 SQ.FT.

CRISPIN

2-BEDROOM TWO-STORY TOWNHOME
1,446 SQ.FT. FLOOR AREA
252 SQ.FT. GARAGE AREA

