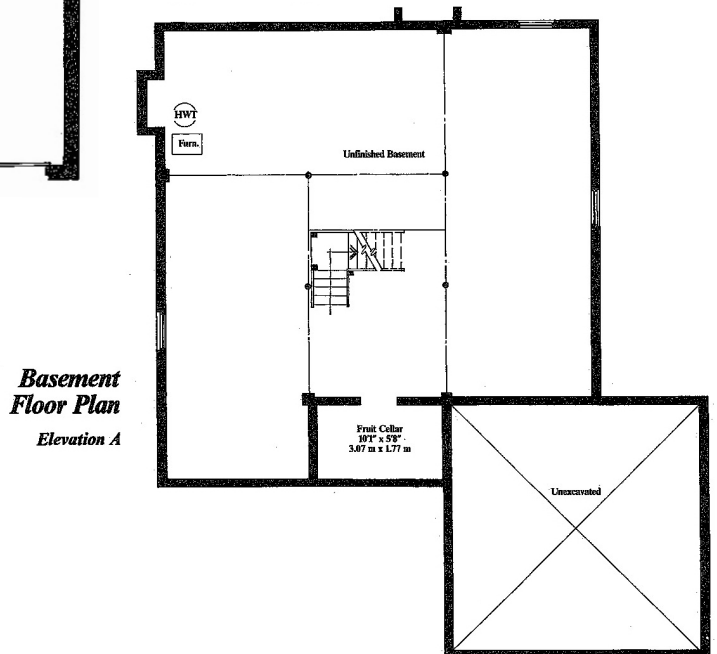
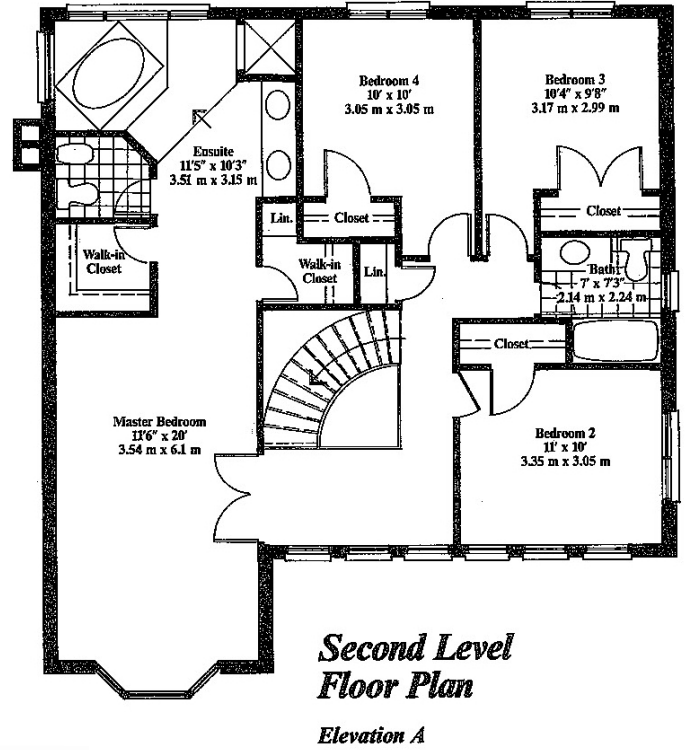
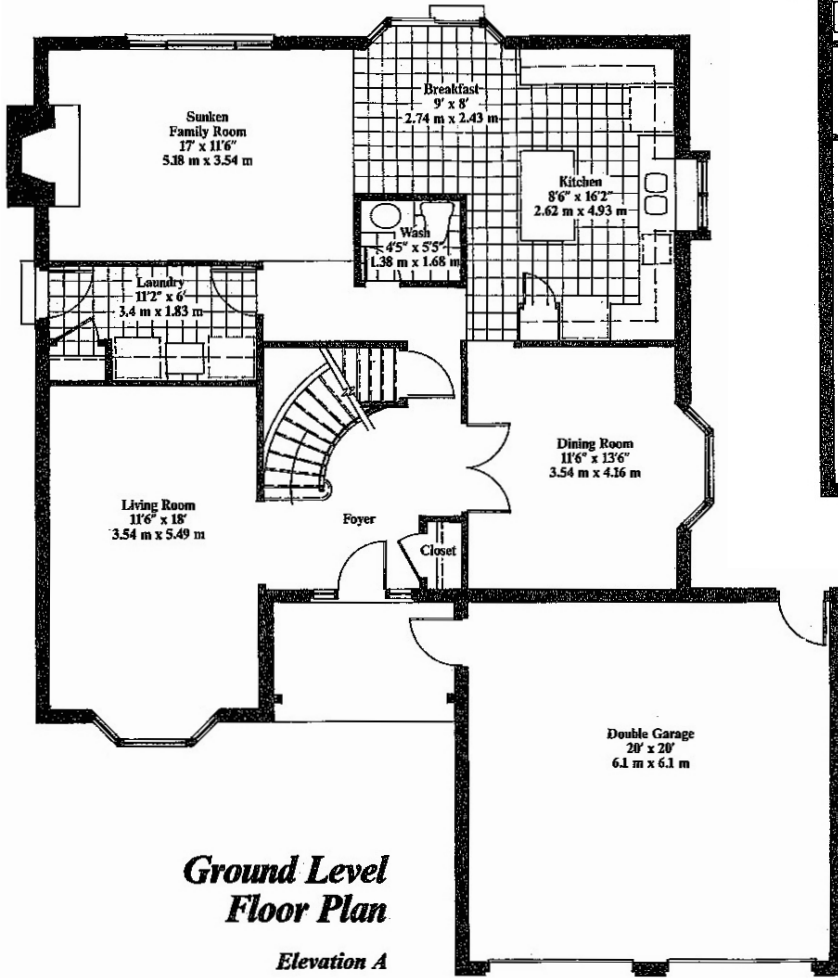


MICHAEL PHINNEY
 SALES REPRESENTATIVE
 DIRECT: 905.617.4669
 OFFICE: 905.618.0707
 LORETTAPHINNEY.COM



FLOOR PLANS
 383 ASPEN FOREST DRIVE
 OAKVILLE



Dimensions and specifications are approximate and subject to change.