

Welcome To 8 McCartney Avenue, Whitby



Stunning family home located in highly sought after community of Williamsburg in Whitby. Over 1,800 square feet of living space and beautiful landscaping with interlocking walkway.

The Shawn Lepp Group*

905.428.8100

ShawnLepp.com

*Sales Representative.

Not intended to solicit buyers or sellers currently under contract with another brokerage



KELLERWILLIAMS.

Energy Lepp Group Real Estate,
Brokerage

Each Office Independently Owned and Operated



Special Features Of This Home

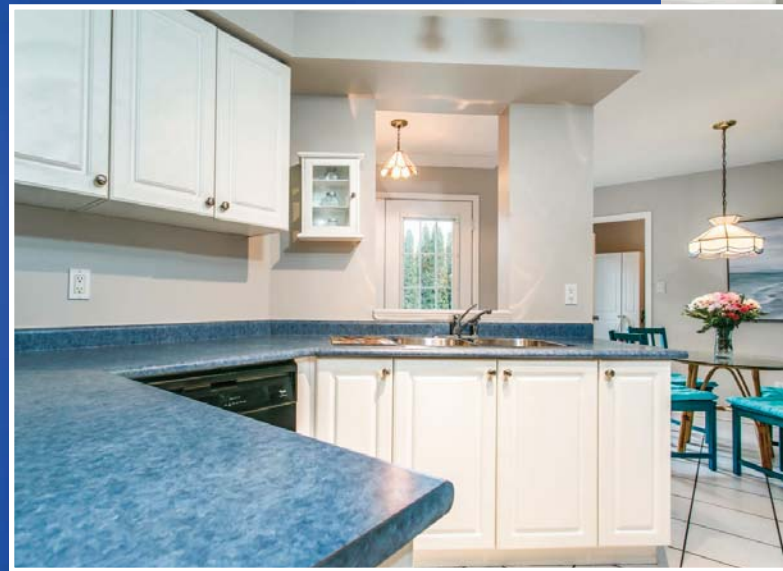
- Beautiful family home in desirable community of Williamsburg in Whitby
- 3 bedrooms 3 baths
- Lot size 29.53 x 119.10 feet
- Taxes \$4,768.82 for 2017
- Bright main floor living room / dining room combination
- Large windows allow for plenty of natural light
- Gleaming hardwood flooring and crown moulding throughout



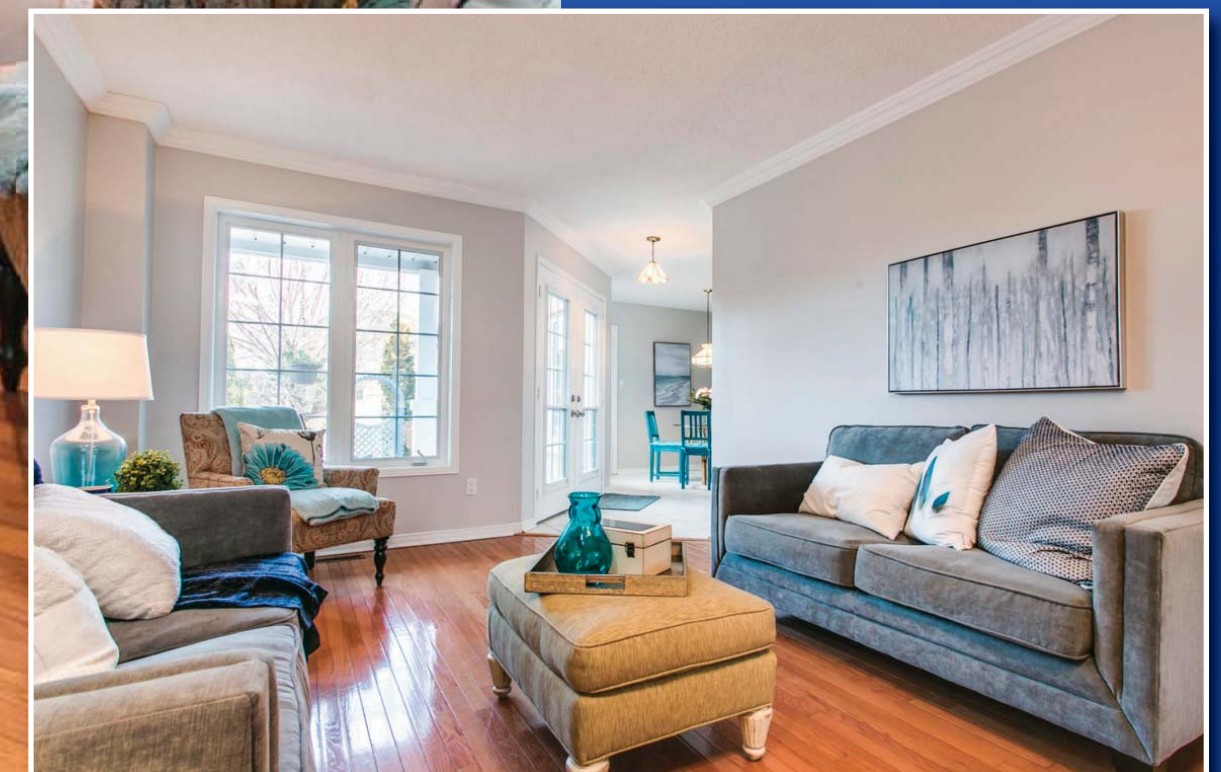
For More Information
visit ShawnLepp.com



- Family size eat-in kitchen with ceramic floors and ample cupboard space
- Breakfast area has walk-out to patio

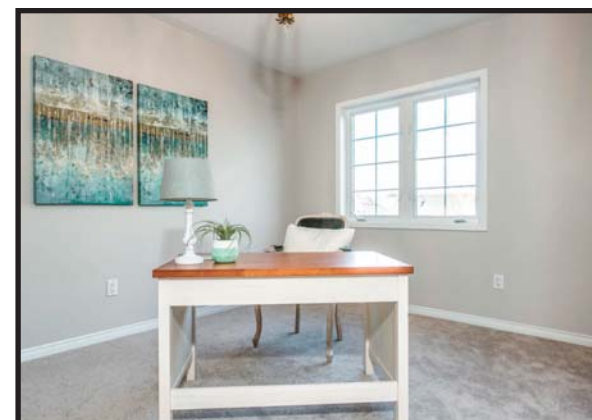
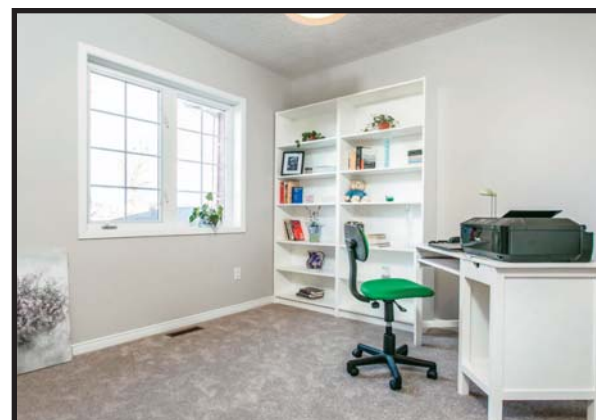


- Spacious family room features enticing gas fireplace, large windows and hardwood flooring





- Three large bedrooms all with immaculate broadloom can be found on the upper level
- Master bedroom boasts 4 piece ensuite and his / hers closets
- Secondary bedrooms both have large windows and double closets



For More
Information visit
ShawnLepp.com



- Walkout to patio and gardens
- attached single car garage with garage door opener and remote

Inclusions:

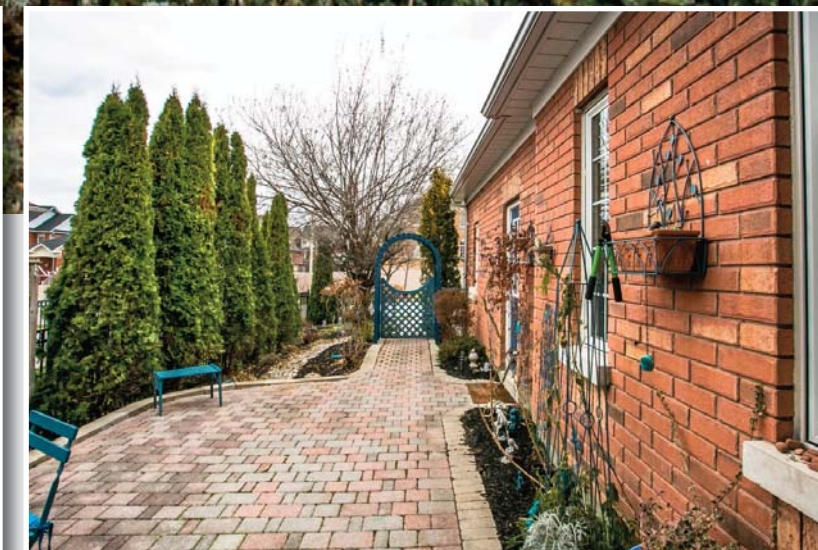
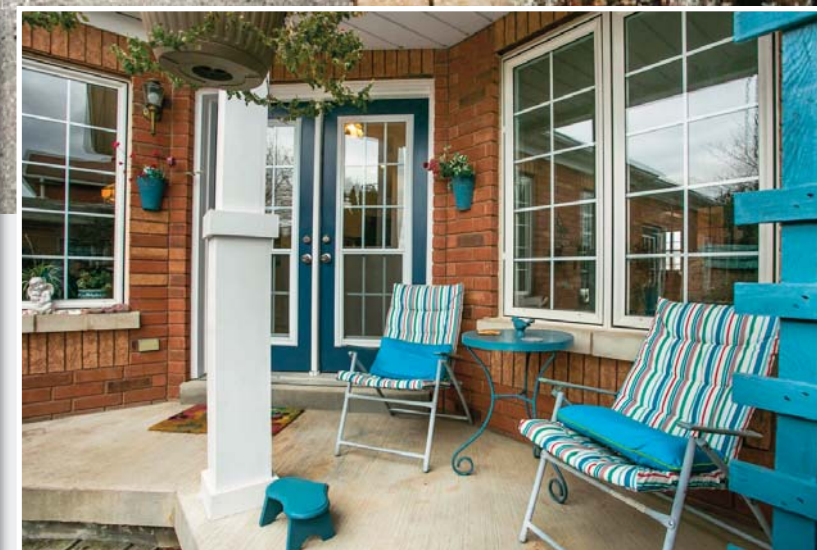
- All electric light fixtures
- Fridge
- Stove
- Built-in dishwasher
- Washer & Dryer
- Garage door opener and remote
- Central air conditioner
- Hot water tank (rental)

Exclusions:

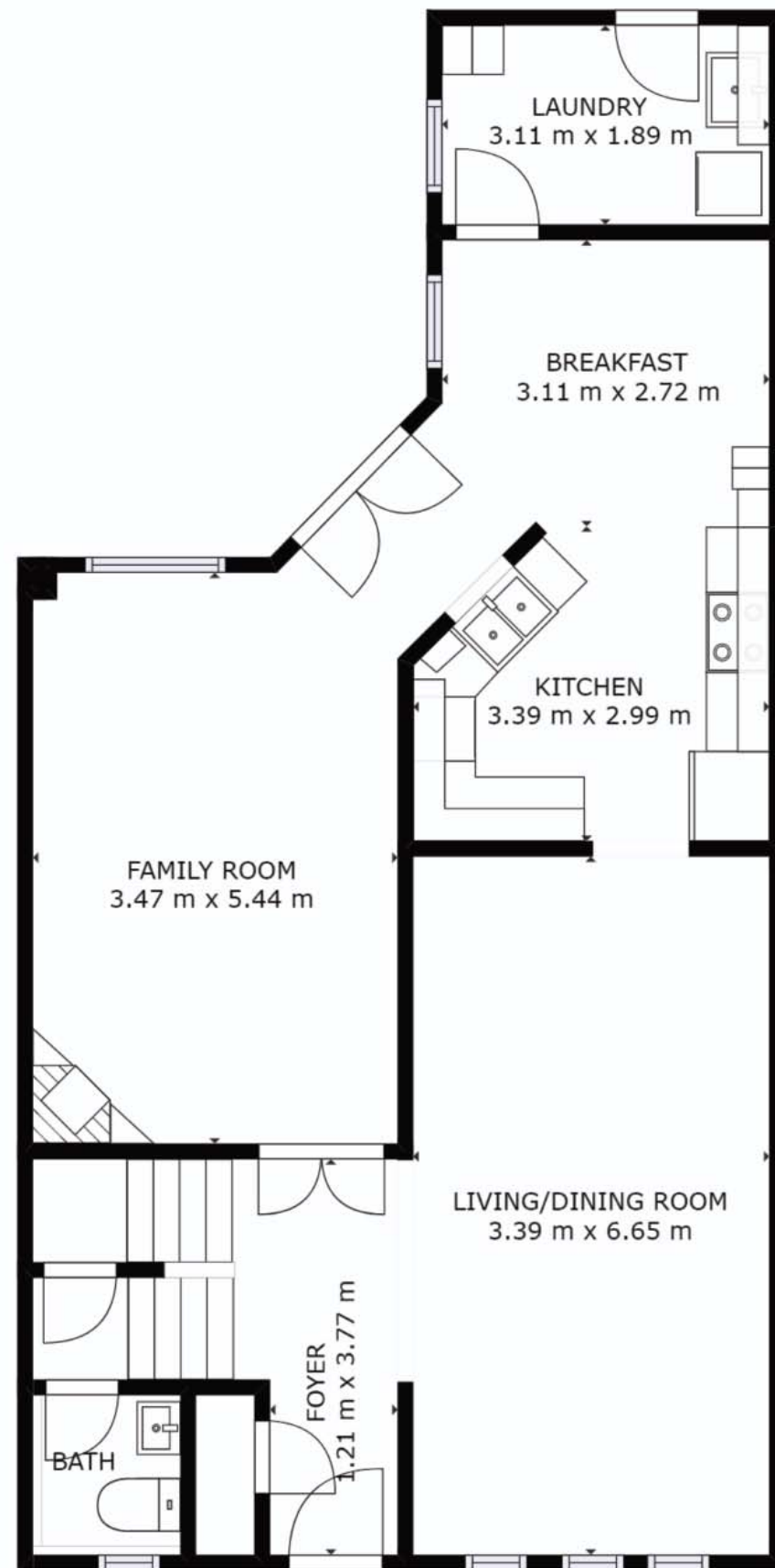
- Chandelier in dining room
- Garden furniture on front porch
- Arbor and trellis

Upgrades:

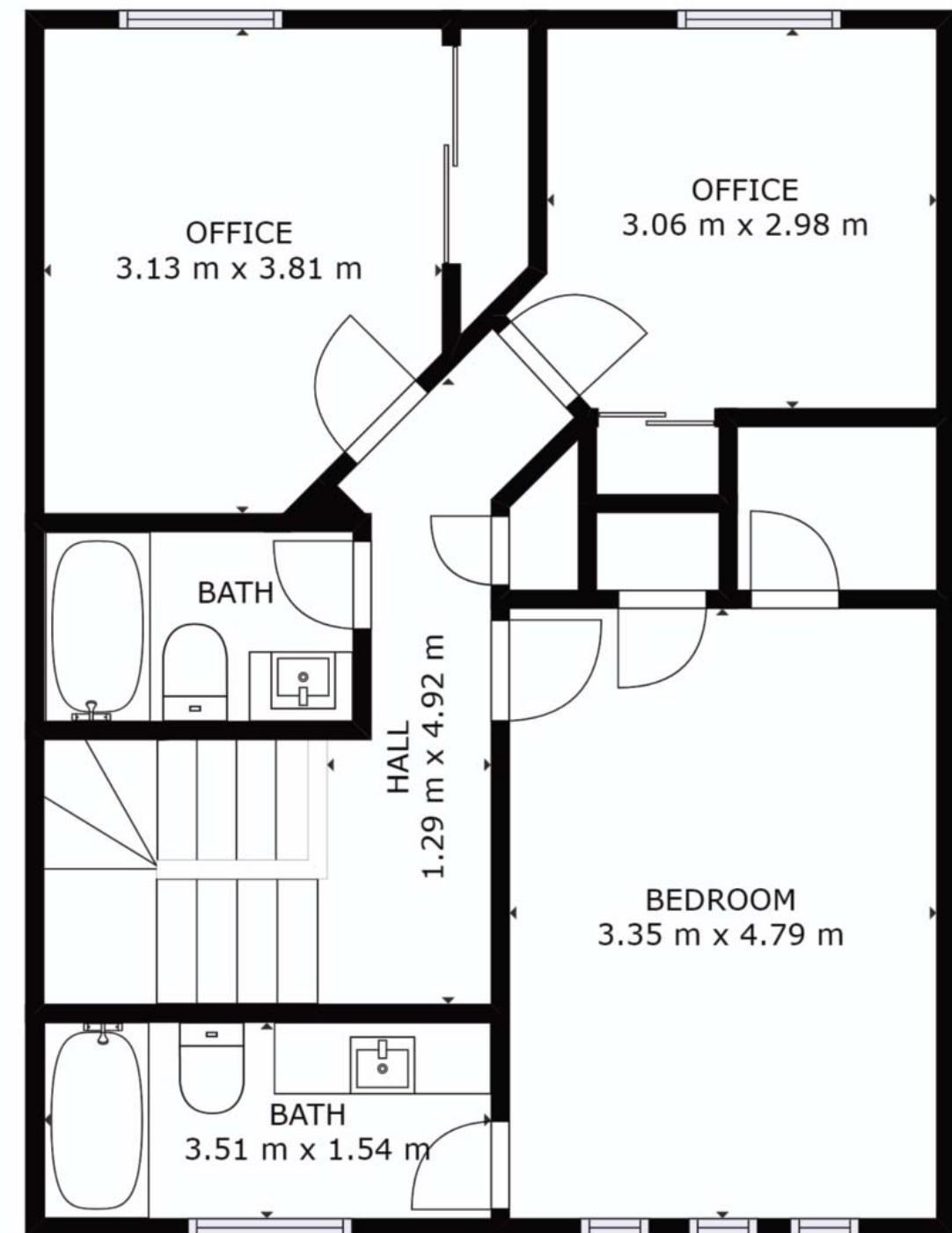
- Shingles (approx 2016)
- Updated broadloom
- Freshly painted
- Beautiful landscaping with interlock walkway



Floor Plans



Floor Plans



Community Information

Elementary Schools

St. Luke the Evangelist C.S.
55 Twin Streams Drive
Whitby, Ontario L1P 1N9
Phone: 905.665.5143

St. John the Evangelist C.S.
French Immersion Gr 1 - 6
1103 Giffard Street
Whitby, Ontario L1N 2S3
Phone: 905.668.4011

Jack Miner P.S.
144 Whitburn Street
Whitby, Ontario L1R 2N1
Phone: 905.668.3249

St. Mark the Evangelist C.S.
French Immersion Gr 7 - 8
95 Waller Street
Whitby, Ontario L1R 1Z7
Phone: 905.721.2460

Julie Payette P.S.
French Immersion Gr 1 - 8
300 Garden Street
Whitby, Ontario L1N 3W4
Phone: 905.668.2225

Secondary Schools

All Saints C.S.S.
3001 Country Lane
Whitby, Ontario L1P 1M1
Phone: 905.666.7753

Father Leo J. Austin C.S.S.
French Immersion Gr 9 - 12
1020 Dryden Boulevard
Whitby, Ontario L1R 2A2
Phone: 905.666.2010

Donald A. Wilson S.S.
681 Rossland Road W
Whitby, Ontario L1P 1Y1
Phone: 905.665.5057

Donald A. Wilson S.S.
French Immersion Gr 9 - 11
681 Rossland Road W
Whitby, Ontario L1P 1Y1
Phone: 905.665.5057

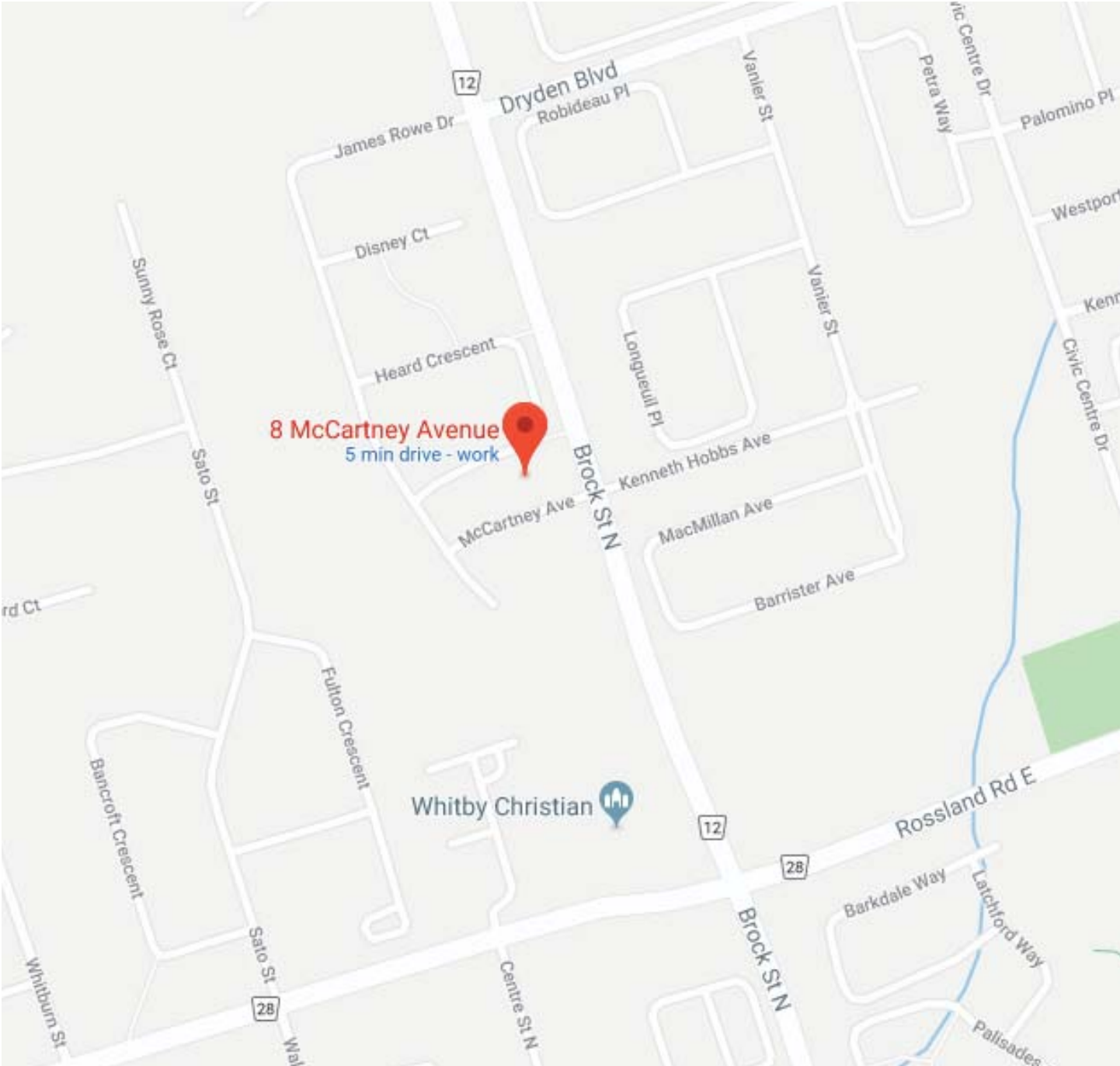
Sinclair S.S.
French Immersion Gr 12 - Yr 5
380 Taunton Road E
Whitby, Ontario L1R 2K5
Phone: 905.666.5400

Community Information

Post Offices

Shoppers Drug Mart #1167
3100 Garden Street
Whitby ON L1R 2G0

Pringle Creek Pharmasave
728 Anderson Street
Whitby ON L1N 2E0





KELLERWILLIAMS®

Energy Lepp Group Real Estate, Brokerage
Each Office Independently Owned and Operated

The Shawn Lepp Group *

905.428.8100

ShawnLepp.com



*Sales Representative.

Not intended to solicit buyers or sellers currently under contract with another brokerage