

Welcome To 4 Schilling Court, Whitby



Meticulously maintained 3 bedroom family home on a quiet cul-de-sac in desirable neighbourhood of Whitby. Beautifully landscaped yards and front interlock walkway. Steps to schools and parks. Call today for more information!

The Shawn Lepp Group*

905.428.8100

ShawnLepp.com

*Sales Representative.

Not intended to solicit buyers or sellers currently under contract with another brokerage



KELLERWILLIAMS.

Energy Lepp Group Real Estate,
Brokerage

Each Office Independently Owned and Operated



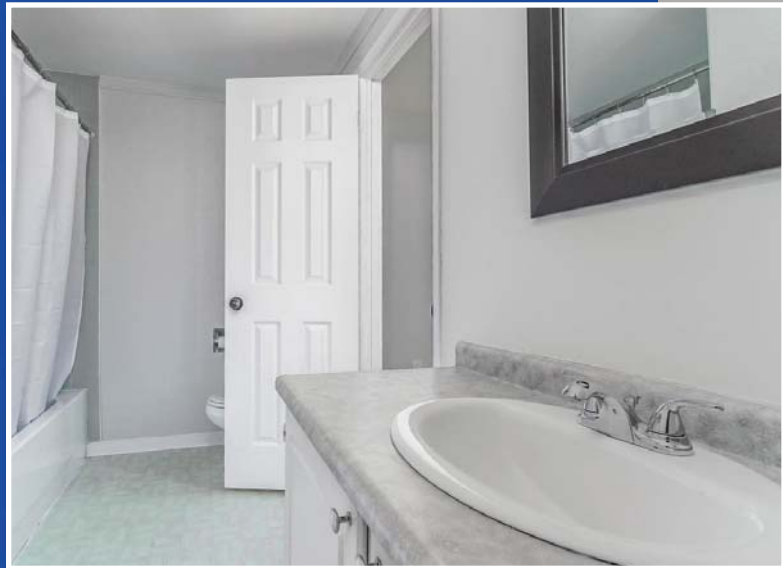
Special Features Of This Home

- Family home in Pringle Creek community of Whitby
- 3 Bedrooms 2 baths
- Lot size 22 x 100.03 feet
- Taxes \$3,601.72 for 2018
- Bright main floor features an open concept family / dining room combination with picture window, hardwood flooring and walkout to deck
- Family size eat-in kitchen with breakfast area and ceramic tile flooring
- Large front foyer with double closet and lovely 2 piece bath



For More Information
visit ShawnLepp.com

- Three spacious bedrooms on the second floor all with large windows, closets and hardwood floors
- Master bedroom with semi-ensuite





- Walkout to large deck in the fenced, child safe backyard
- Attached single car garage

Inclusions:

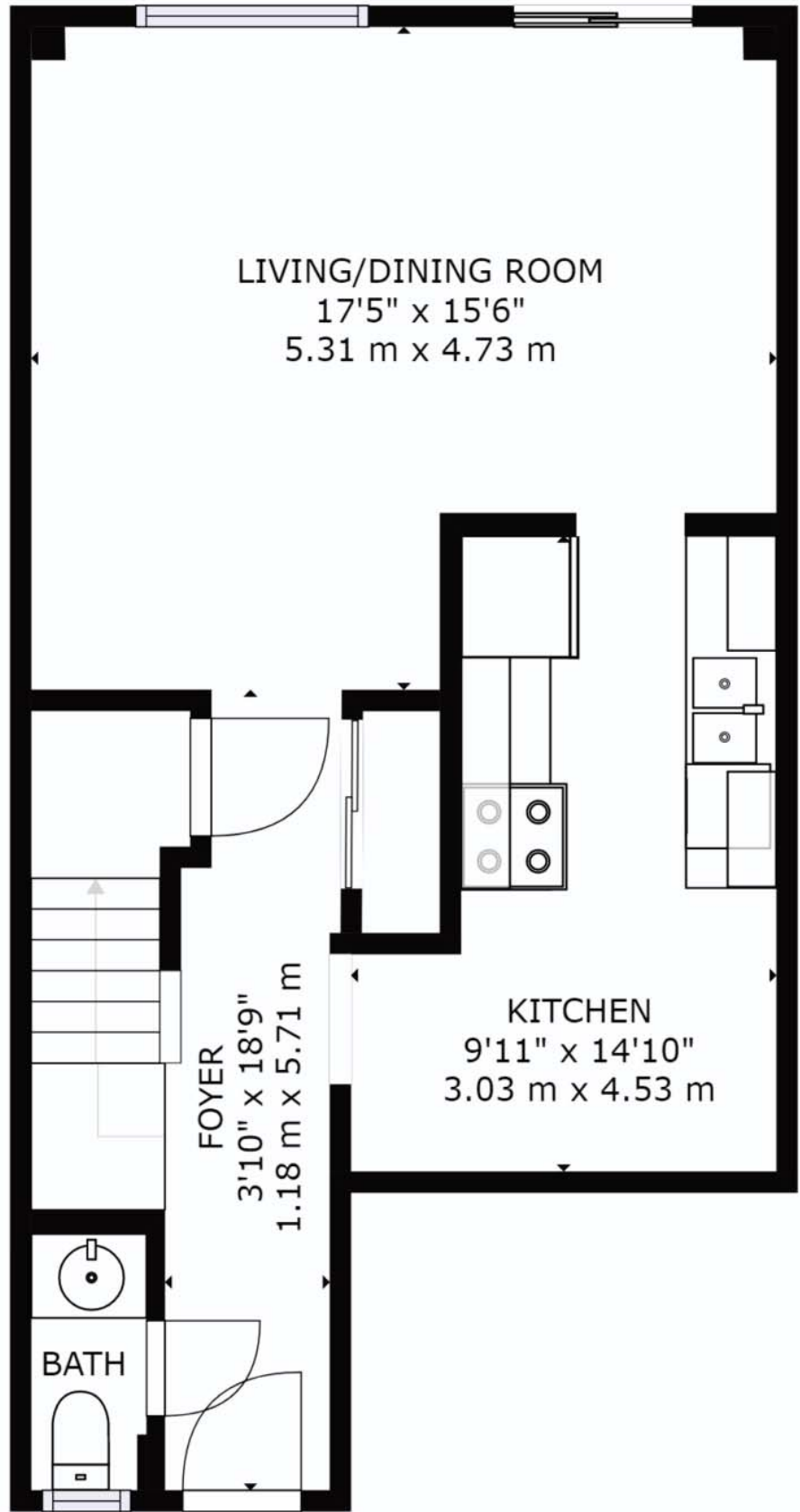
- All electric light fixtures
- Fridge
- Stove
- Built-in dishwasher
- Washer & Dryer

Upgrades:

- Freshly painted (2019)
- Furnace (approx 2009)
- Central air conditioner (approx 2008)
- Roof resingled (approx 2005)
- Some updated windows (approx 2004)

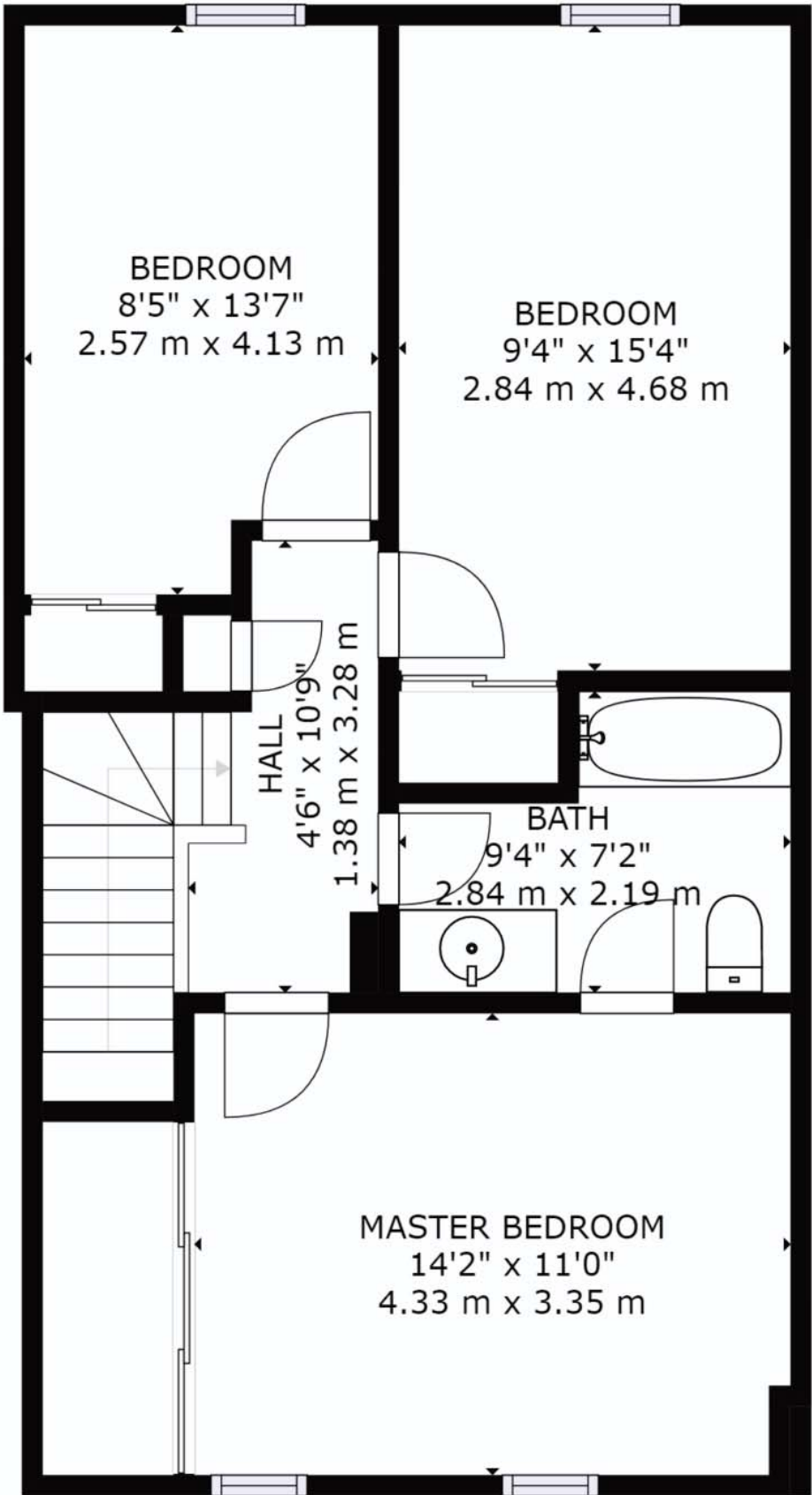


Floor Plans



FLOOR 1

Floor Plans



FLOOR 2

Community Information

Elementary Schools

St. Theresa, Whitby C.S.
173 Crawford Street
Whitby, Ontario L1N 3S4
Phone: 905.668.8261

St. Mark the Evangelist C.S.
French Immersion Gr 1 - 8
95 Waller Street
Whitby, Ontario L1R 1Z7
Phone: 905.721.2460

C.E. Broughton P.S.
80 Crawford Street
Whitby, Ontario L1N 9L6
Phone: 905.665.8229

Julie Payette P.S.
French Immersion Gr 1 - 8
300 Garden Street
Whitby, Ontario L1N 3W4
Phone: 905.668.2225

Secondary Schools

Father Leo J. Austin C.S.S.
1020 Dryden Boulevard
Whitby, Ontario L1R 2A2
Phone: 905.666.2010

Father Leo J. Austin C.S.S.
French Immersion Gr 9 - 12
1020 Dryden Boulevard
Whitby, Ontario L1R 2A2
Phone: 905.666.2010

Anderson C.V.I.
400 Anderson Street
Whitby, Ontario L1N 3V6
Phone: 905.668.5809

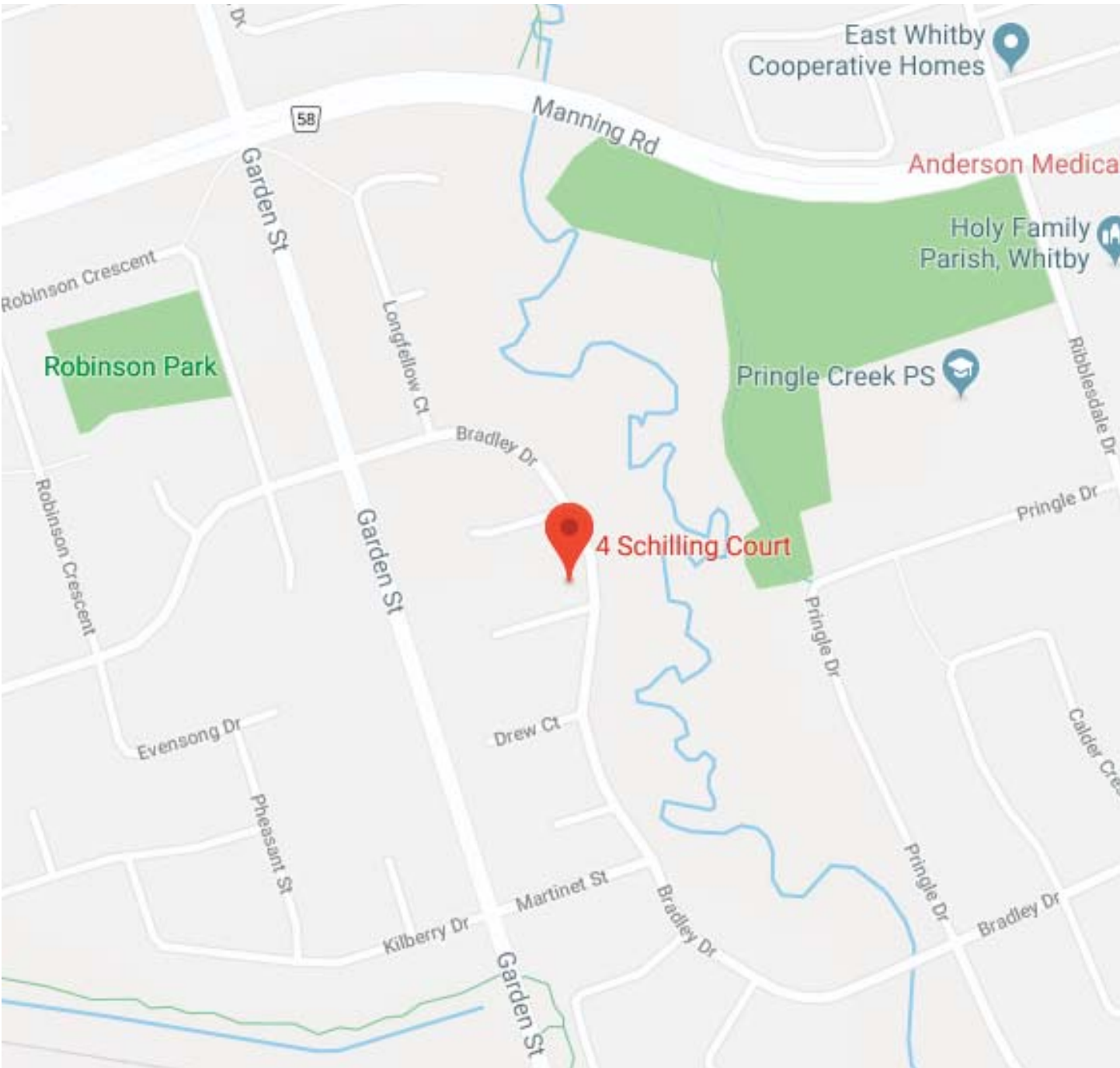
Donald A. Wilson S.S.
French Immersion Gr 9 - 12
681 Rossland Road W
Whitby, Ontario L1P 1Y1
Phone: 905.665.5057

Community Information

Post Offices

Pringle Creek Pharmasave
728 Anderson Street
Whitby ON L1N 2E0

Shoppers Drug Mart #1167
3100 Garden Street
Whitby ON L1R 2G0





KELLERWILLIAMS®

Energy Lepp Group Real Estate, Brokerage
Each Office Independently Owned and Operated

The Shawn Lepp Group *

905.428.8100

ShawnLepp.com



*Sales Representative.

Not intended to solicit buyers or sellers currently under contract with another brokerage