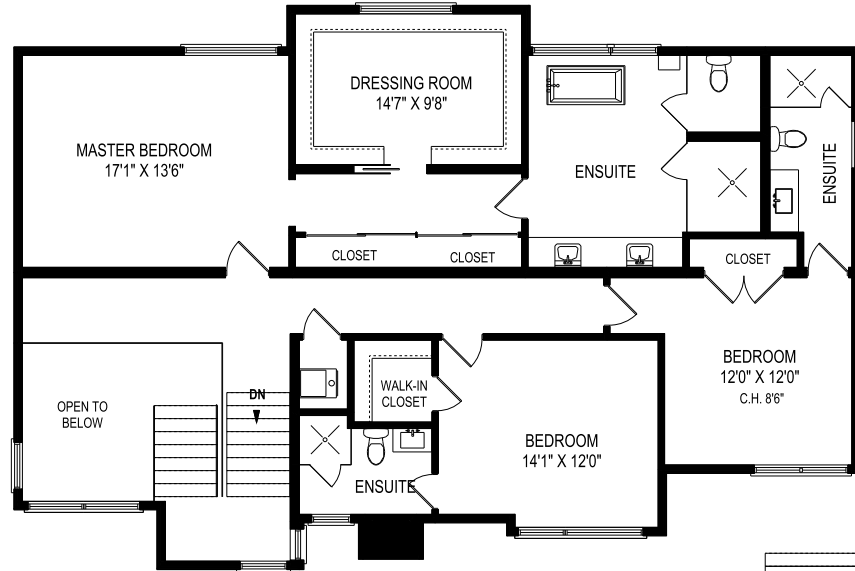


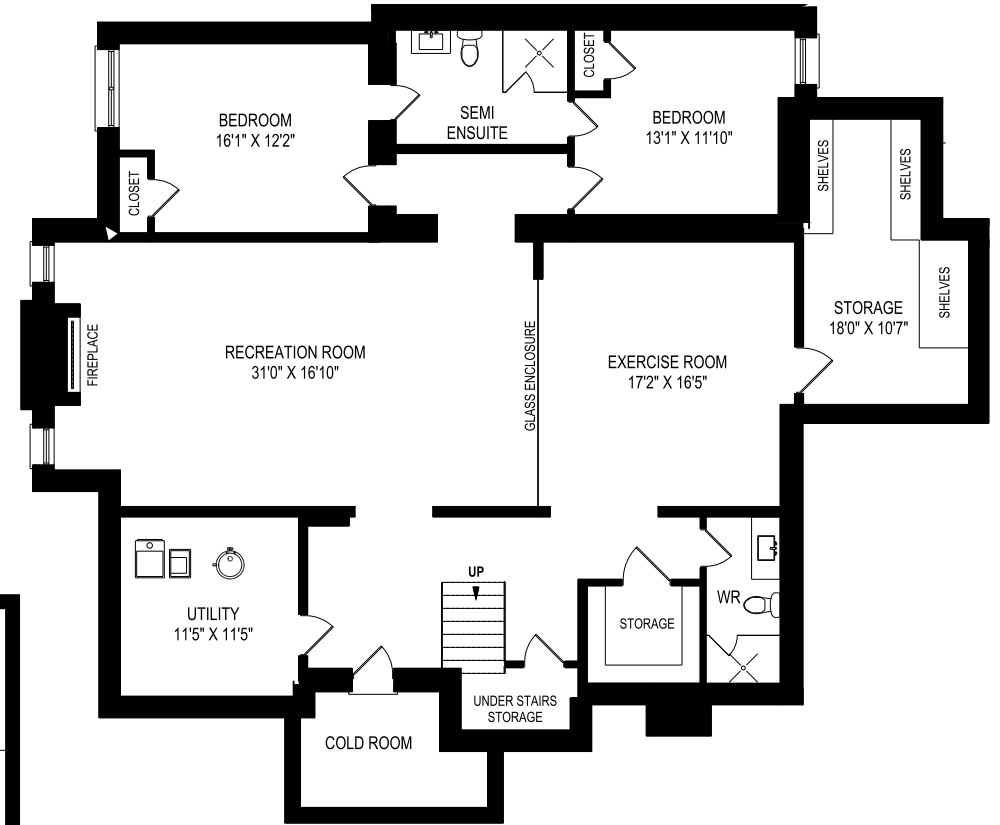


FLOOR PLANS

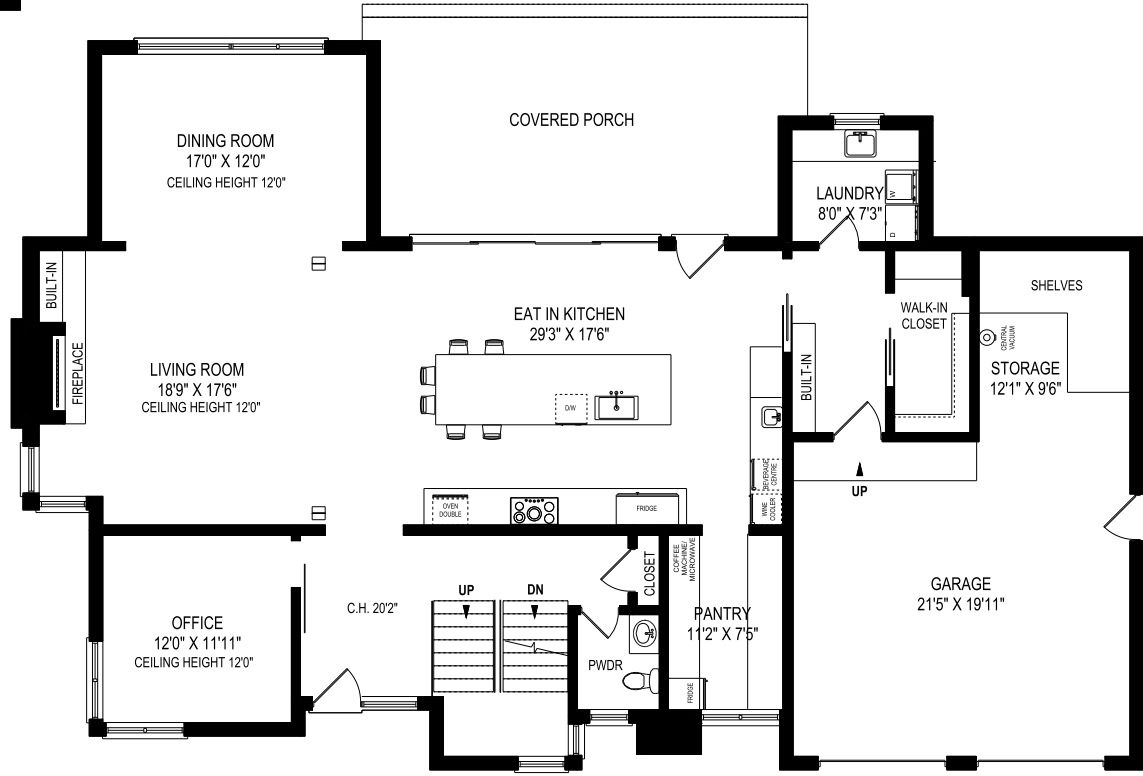
1303 SOUTH ALDO DRIVE, MISSISSAUGA



CEILING HEIGHT 9'0"
SECOND FLOOR - 1583 SQUARE FEET
 AREA EXCLUDES 103 SQ.FT. OPEN TO BELOW SPACE



CEILING HEIGHT 8'7"
LOWER LEVEL - 2445 SQUARE FEET



CEILING HEIGHT 10'0"
MAIN FLOOR - 1985 SQUARE FEET

NOTE: MEASUREMENTS & AREA ARE APPROXIMATE. PROVIDED AS GUIDELINE ONLY.